

INFORMATION PACK

The **ULTIMATE** Guide to
Future Focused Learning®



BFX Furniture

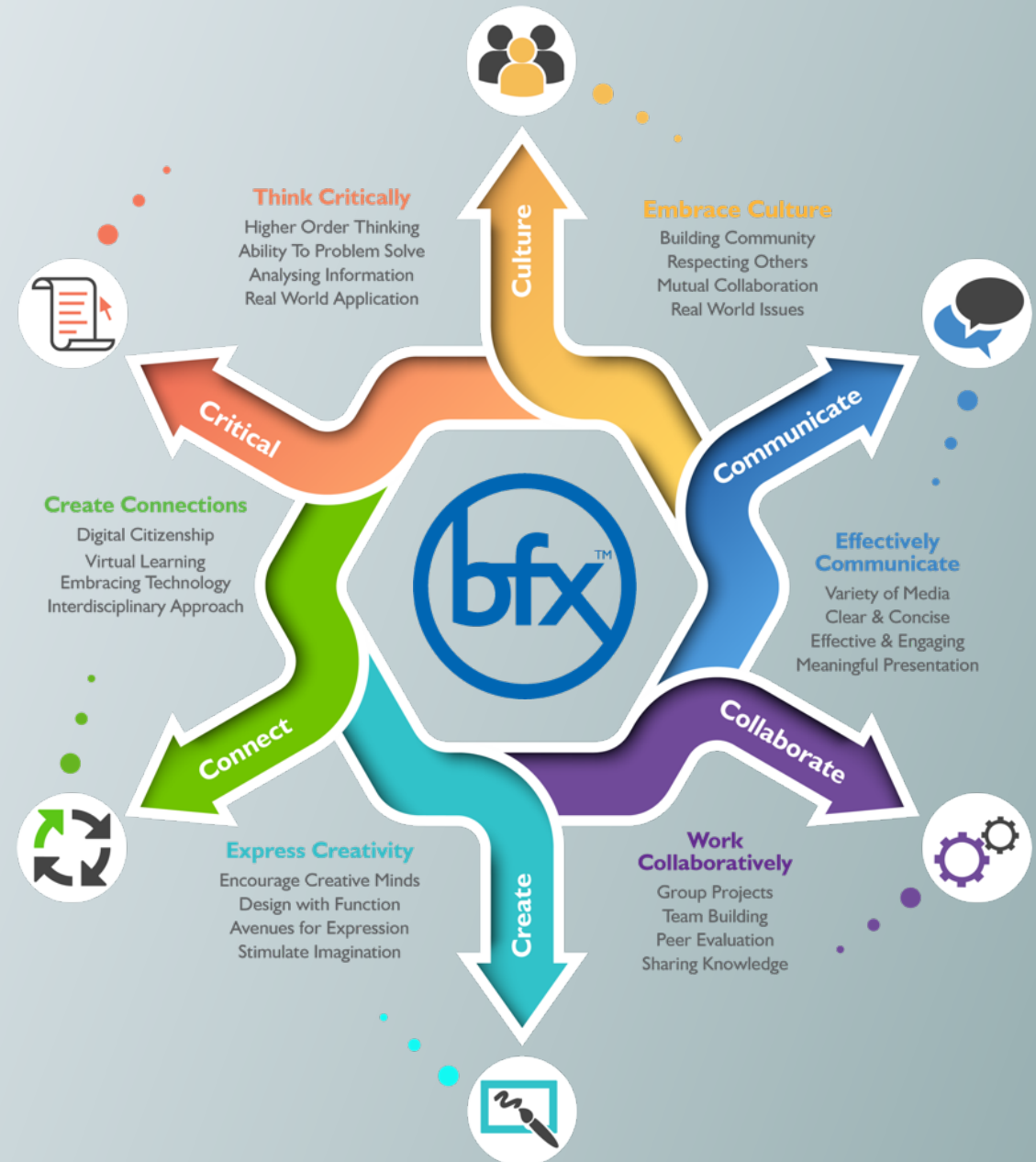
What are Future Focused Learning® Zones?



Future Focused Learning® Zones emerged from the theoretical model of the 6 C's of Education for the 21st century. The 6 C's embody pedagogical practices that encourage students to 'Think Critically', 'Effectively Communicate', 'Create Connections', 'Express Creatively', 'Work Collaboratively' and 'Embrace Culture'.

The 6 C's, and thereby the 6 types of Future Focused Learning® Zones focus on nurturing the skills students need to become successful individuals entering the workforce for the first time, and throughout their adult life.

Students don't just thrive in amenity rich settings, they begin to congregate towards spaces they enjoy learning in. They discover their own learning style and become 'Future Focused Learners'.

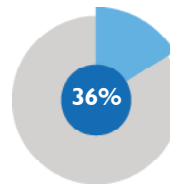


Australian Research Discovers 'Deep Learning' Occurs in Innovative Learning Environments

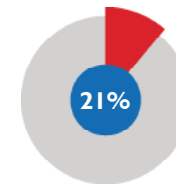
In today's classrooms, traditional learning spaces and traditional teaching approaches are the most common occurring pedagogical practice in Australian and New Zealand schools. However, new evidence shows that deep learning actually occurs in more open plan classrooms.

A 2017 Australian study conducted by Innovative Learning Environments & Teacher Change (ILETC) project at the University of Melbourne provides a unique insight into the future of learning environments in Australian and New Zealand schools.

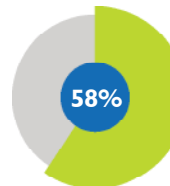
The results of a survey sent out to over 6,000 School Principals in Australia and New Zealand confirms that deep learning occurs within open plan classrooms, with pedagogical practices grounded in collaborative and shared learning.



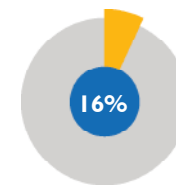
36% of schools still use the traditional teacher facilitated direct instruction teaching approach.



21% of schools have transitioned to open plan classrooms.



58% of schools in Australia and New Zealand are still using traditional closed classrooms.



16% of schools have adopted teaching approaches grounded in collaborative/shared learning.

The highest recorded instances of student deep learning occurred in open plan classrooms that utilised collaborative learning supported only by teachers as needed. We can only expect more and more Australian and New Zealand schools to adopt these innovative learning spaces and progressive teaching approaches in the years to come. It's up to us to create 21st century classroom environments that support deep learning and lead to better student outcomes.

Read the full study by the University of Melbourne [Click Here](#)

Create Zones



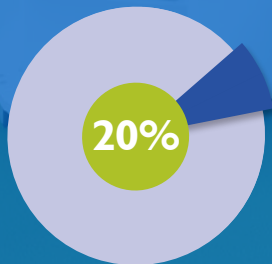
Create Zones provide the perfect environment for student expression. Featuring colourful and bright spaces with natural lighting to encourage artistic growth. In these spaces, students draw on their curiosity and imagination to pose intriguing questions, explore ideas, environments, and technologies.

Benefits:

Creative thinking involves students learning how to;

- Generate and apply new ideas in specific contexts
- See existing situations in a new way
- Identify alternative explanations
- See or making new links that generate a positive outcome.

Employment in the creative industries is growing 40% faster than the Australian economy as a whole. With Australia's creative sector contributing over \$90 billion to our economy's annual turnover, the need for young Australians to further support this industry is invaluable.



Many of the biggest and most successful businesses in the world allow employees to devote 20% of their work time to thinking creatively and exploring new ideas.

Hicks, K. (2015). 'Why Creativity in the Classroom Matters More Than Ever'. Edudemic. Published 17 March 2015. Retrieved from <<http://www.edudemic.com/creativity-in-the-classroom/>>



Example Create Zones



[VIEW OUR FULL RANGE >](#)

Collaborate Zones



Collaboration in the classroom emerges when students are free to work together in small or large groups. Collaborate Zones are flexible and supportive spaces in which students can arrange and rearrange settings according to how they best work together.

Collaborative learning ultimately promotes the exchange of ideas between students and leads to higher levels of productivity, teamwork, increased information retention and increased confidence. It also assists in strengthening their social skills.

Benefits:

Typically, people spend 65% of the work day collaborating and communicating with others. A study recording student outcomes in mathematics when using group work to solve problems revealed; 70% of students found group work to be more helpful than individual work. 83% of students felt working in groups to learn math had a positive effect.

"Flexible classrooms give students a choice in what kind of learning space works best for them and helps them to work collaboratively..." - Edutopia

Edutopia 2015, 'Flexible Classrooms: Providing the Learning Environment That Kids Need', Published 4 August 2015, Edutopia, Retrieved from <<https://www.edutopia.org/practice/flexible-classrooms-providing-learning-environment-kids-need>>



Example Collaborate Zones



[VIEW OUR FULL RANGE >](#)

Communicate Zones



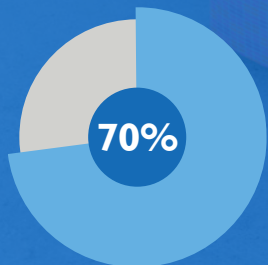
Communication can flow freely and most effectively in learning environments that incorporate a combination of small intimate spaces and group spaces that encourage the sharing of ideas. Communication Zones promote active discussion around conference-style configurations. They also provide the multi-purpose furnishings and resources that allow students to illustrate ideas, delegate tasks or brainstorm topics.

Benefits:

Giving students the opportunity to grow their confidence, self-esteem and exercise critical communication skills in a supportive space is vital to not only their personal and academic growth, but also their future careers.

“Communication is paramount in education. Whether it is teacher to teacher, student to student, teacher to parent or vice versa ... communication is needed to make sure our students are successful” – David Andrade, Education Technology Specialist.

70.2% of employers consider communication skills as the most desirable attribute on a resume when hiring.



70.2% of employers consider communication skills as the most desirable attribute on a resume when hiring college graduates

NACE 2015. 'Job Outlook 2016: Attributes Employers Want to See on New College Graduates' Resumes'. National Association of Colleges and Employers. Published 18 November 2015. Retrieved from <<http://www.naceweb.org/s11182015/employers-look-for-in-new-hires.aspx#sthash.TsnL1ate.dpuf>>



Example Communicate Zones



[VIEW OUR FULL RANGE >](#)

Critical Zones

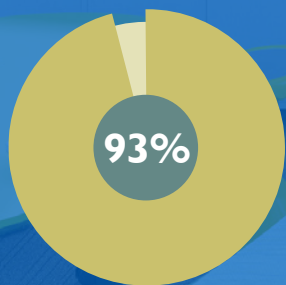


Critical thinking in the classroom involves students learning how to problem solve, analyse information and unpack ideas. It is through exercising critical thinking skills that students develop a more comprehensive understanding of a topic and learn how to apply their knowledge to real world scenarios.

Critical Zones are agile and easily adaptable spaces that can be broken apart from settings that allow for problem solving activities and private reflective spaces for individuals.

Benefits:

- Students become broad and adventurous thinkers
- Generate innovative solutions
- Use their reasoning skills to analyse and evaluate
- Plan and think strategically



93% of businesses and employers believe “a demonstrated capacity to think critically, communicate clearly, and solve complex problems is more important than an undergraduate major.”

ProCon. (2013). ‘Critical Thinking Is Most Important Skill To Learn In School, Gallup Survey Finds’. Published 22 August 2013. Retrieved from <<http://www.procon.org/headline.php?headlineID=005174>>



Example Critical Zones



[VIEW OUR FULL RANGE >](#)

Connect Zones



Connectivity in the classroom allows students to get in touch with each other, the community and the real world. The key to unlocking student's academic potential is opening them up to the idea of asking questions. They can then connect to each other and learning resources in order to find the answers.

Connect Zones provide a safe and supportive space in which students can build positive and meaningful relationships with their peers, teachers and with their learning.

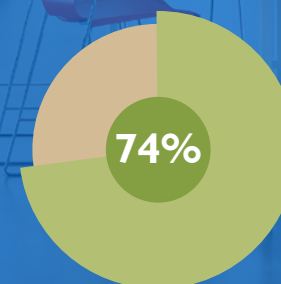
Furniture that allows for seamless technology integration in the classroom is essential here. Whether it be with iPads, tablets or smartboards. Incorporating interactive whiteboards and easily movable soft seating into the space will motivate students to engage with one another as well as the content.

Benefits:

“One of the real benefits of using technology is that it allows teachers and students to bring real world issues, different cultures and histories to life in the classroom.” – Brett Salakas

“Building relationships with students is about meeting students where they are, attempting to understand them, and developing connections with them.”

– H. Richard Milner IV, Associate Professor



74% of educators surveyed said technology is key to helping them expand classroom content.

Murray, C. (2013). 'Survey: 74 Percent of Educators Support the Use of Technology in Schools'. EdTech Magazine. Published 6 February 2013. Retrieved from <<http://www.edtechmagazine.com/k12/article/2013/02/survey-74-percent-educators-support-use-technology-schools>>

Example Connect Zones



[VIEW OUR FULL RANGE >](#)

Culture Zones



Understanding contemporary Australian culture helps teachers build a culturally inclusive learning experience for their students. This starts with broadening cultural and ethnic horizons in a nurturing environment where students feel comfortable in sharing their opinions, ideas and beliefs.

It's important for Future Focused Learners to understand;

- Culture is complex and dynamic
- Culture influences perspectives and identities
- Culture can be expressed in a variety of ways
- Culture can include ways of behaving, thinking, valuing and being

Creating an inclusive classroom culture is crucial for student's cognitive and emotional development. Culture Zones incorporate a variety of shared spaces that foster a community of learners as well as support fluid spaces for the individual. This includes large scale soft seating settings and breakout spaces, giving students responsibility and choice in where they learn.

Benefits:

33.1% of students in NSW as of 2016 are of a language background other than English

"Inclusive classrooms are classrooms in which instructors and students work together to create and sustain an environment in which everyone feels safe, supported and encouraged to express her or his views and concerns." – Shari Saunders & Diana Kardia, University of Michigan



Example Culture Zones



[VIEW OUR FULL RANGE >](#)

'New New School'

Discover how to build a new 'new' school, not a 'new' old school



Dr Peter Webster, Principal at John XXIII Primary and St Mark's Catholic College, shares his experience with BFX Furniture.

Watch the video to see how one school's journey with BFX Furniture completely opened their eyes to new ways students can thrive in rich learning environments.

Making the transition to 21st-century learning doesn't just stop with the classroom. It's a complete paradigm shift. Resources, technology and pedagogy, come to life in flexible learning environments.

The main benefit of these new spaces is that the students are more engaged. They're active in their learning and active around the space. They're collaborating, communicating and connecting with one another in new ways.





BFX Furniture

We offer a **FREE** on-site consultation that includes:

- Measure & Quote
- 2D or 3D floor plan
- Expert advice from our experienced Furniture Consultants

BOOK NOW

Why choose BFX?

BFX Furniture is much more than just a furniture supplier. No matter how big or small the project, you can expect nothing but professional service every step of the way, from our expert sales consultants to our delivery and installation team.

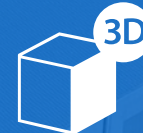
BFX has grown to become one of the leading suppliers of furniture in Australia. With a service backed by years of extensive industry experience and a team dedicated to market research, we don't just deliver furniture, we deliver innovation and superior design. We are dedicated to helping you revitalise your school with Future Focused Learning.

Our 5-Step Fit-Out Process



1. On-site Consultation & Measure

Sit down with an expert and plan your perfect design.



2. Custom 3D Designs to Specifications

Visualise your space before you commit.



3. Quote Acceptance

Be confident you're getting the best price.



4. On Time Delivery

Straight from our QLD manufacturing facility.



5. Ongoing Support

Real people, lasting relationships.