



BFX Furniture

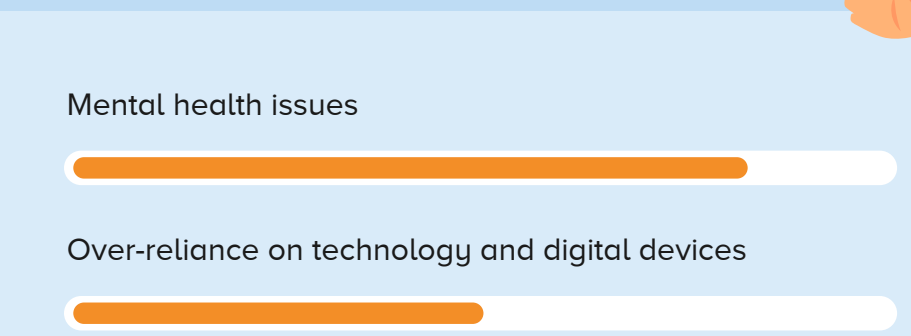
TEACHER SURVEY

2023

Thank you to over 500 Australian teachers who participated in our survey.

Explore their collective insights on learning space design, the challenges facing students and more.

Which best describes student numbers in your classes?

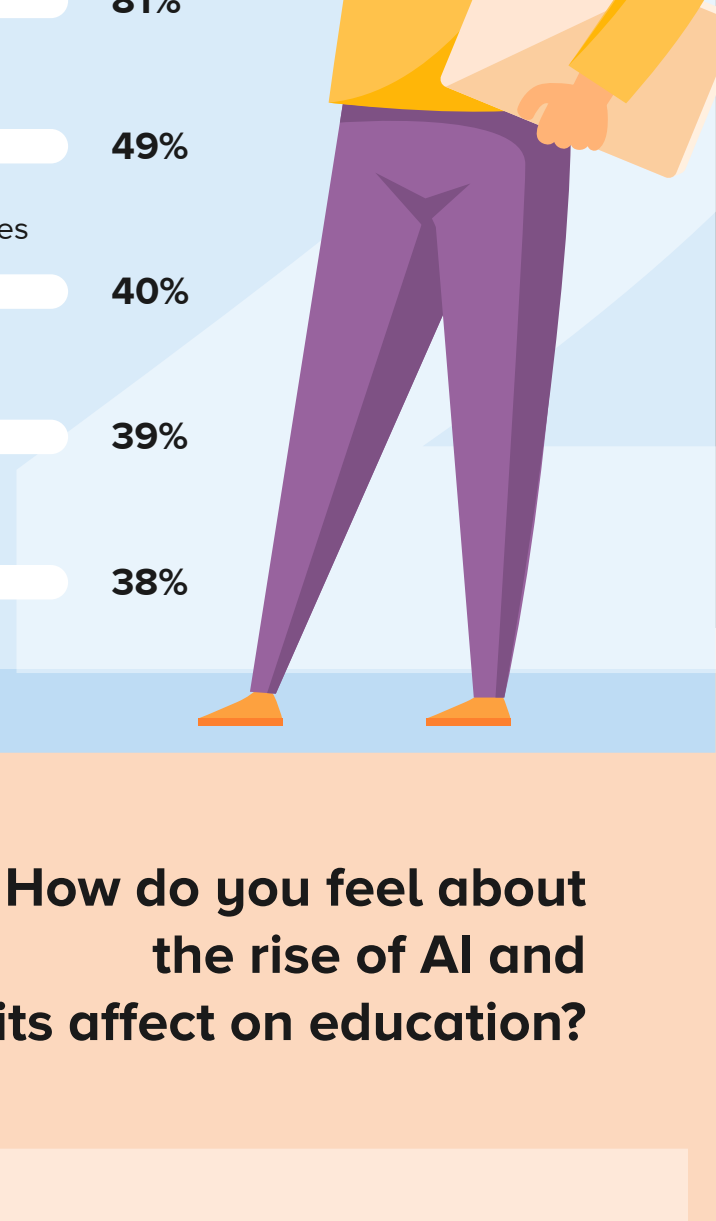
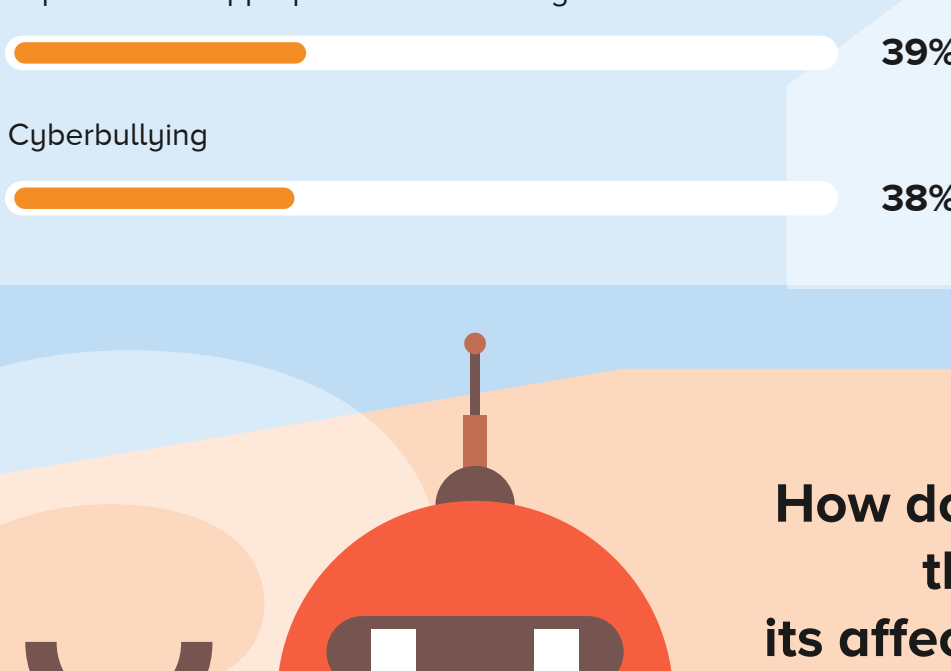


29% believe student numbers are **too high**

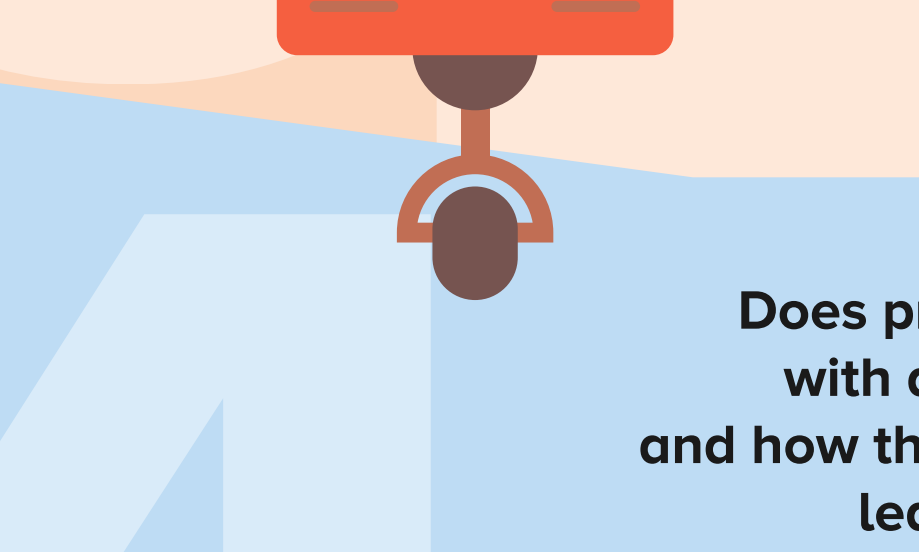
65% believe student numbers are **just right**

6% believe student numbers are **too low**

Which of the following do you consider to be the biggest challenges facing students today?



How do you feel about the rise of AI and its affect on education?



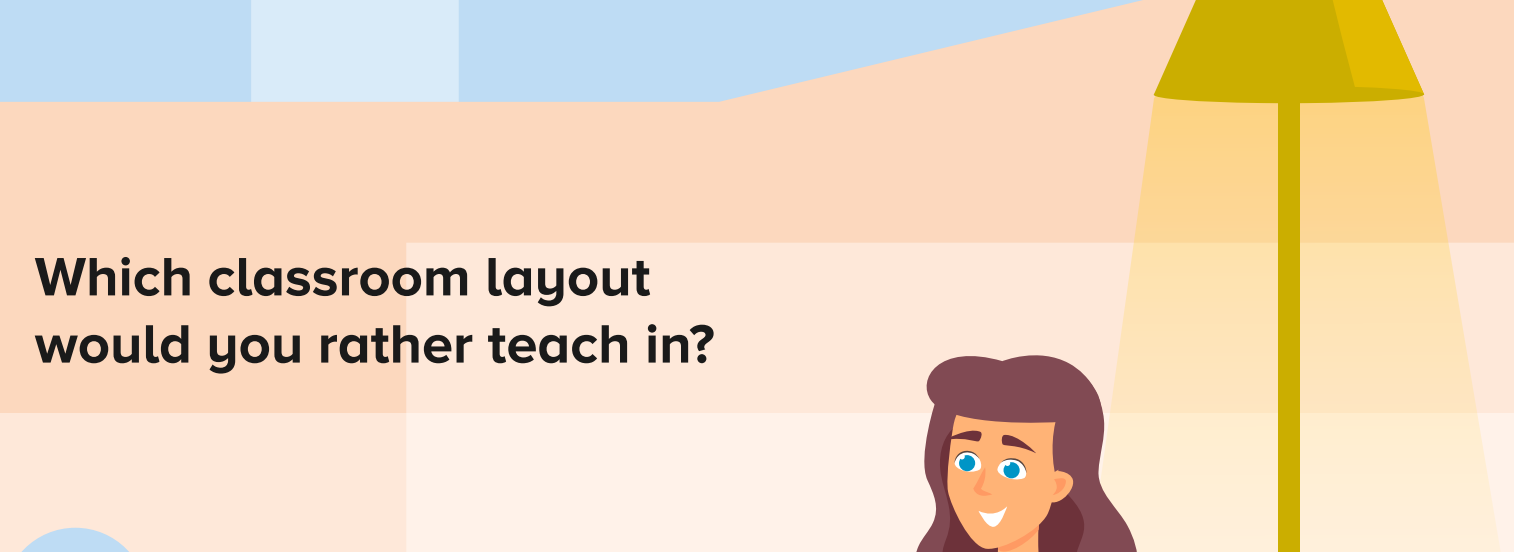
32% **positive**

47% **neutral**

21% **negative**

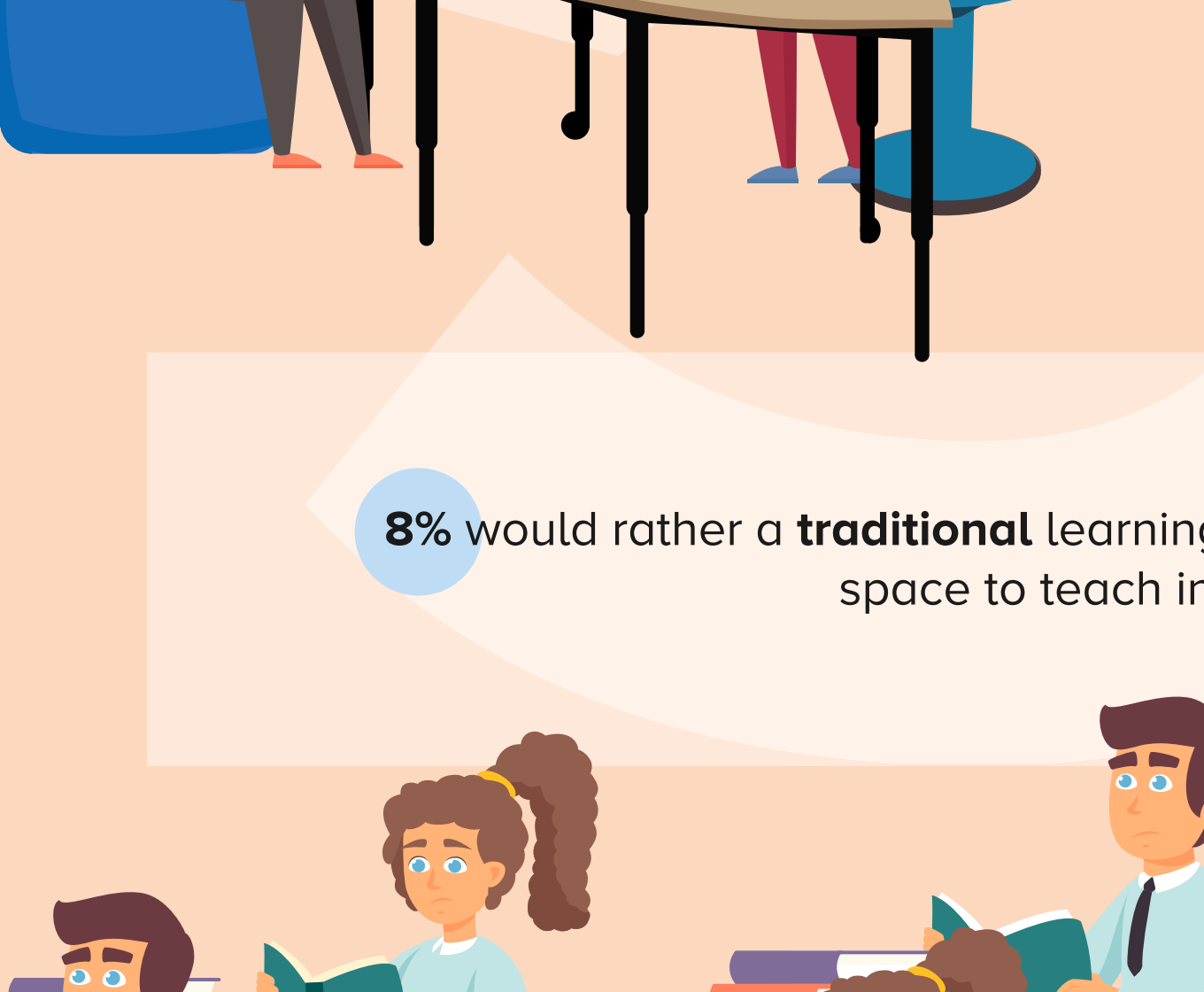
Does providing students with a choice of where and how they learn improve learning outcomes?

71% of teachers **agree**



Which classroom layout would you rather teach in?

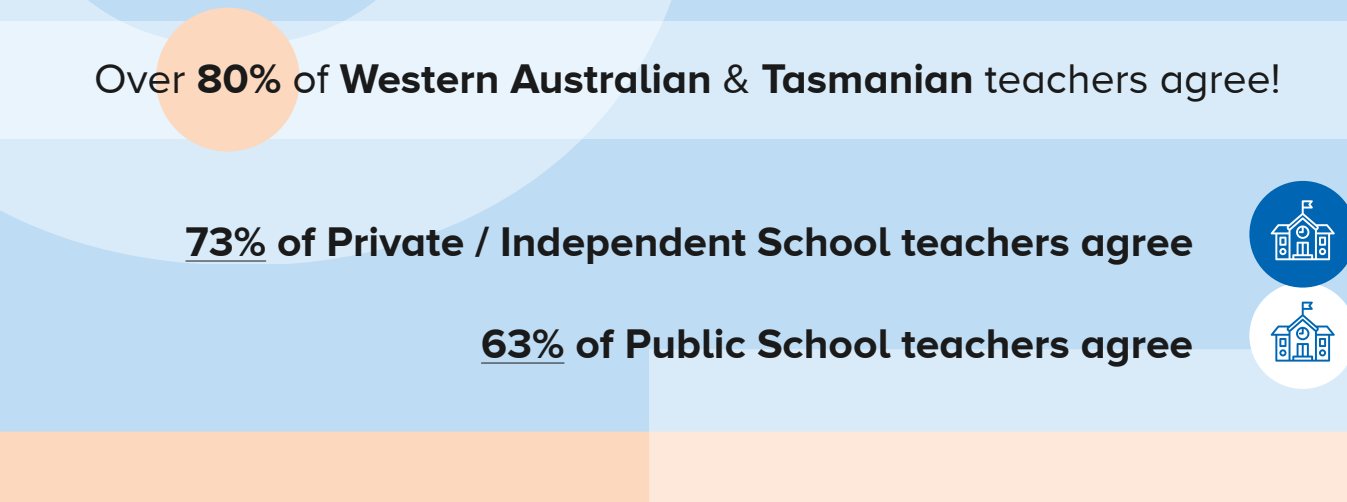
92% would rather a **modern/agile** learning space to teach in.



8% would rather a **traditional** learning space to teach in.



Does the use of modern flexible learning furniture improve learning outcomes?

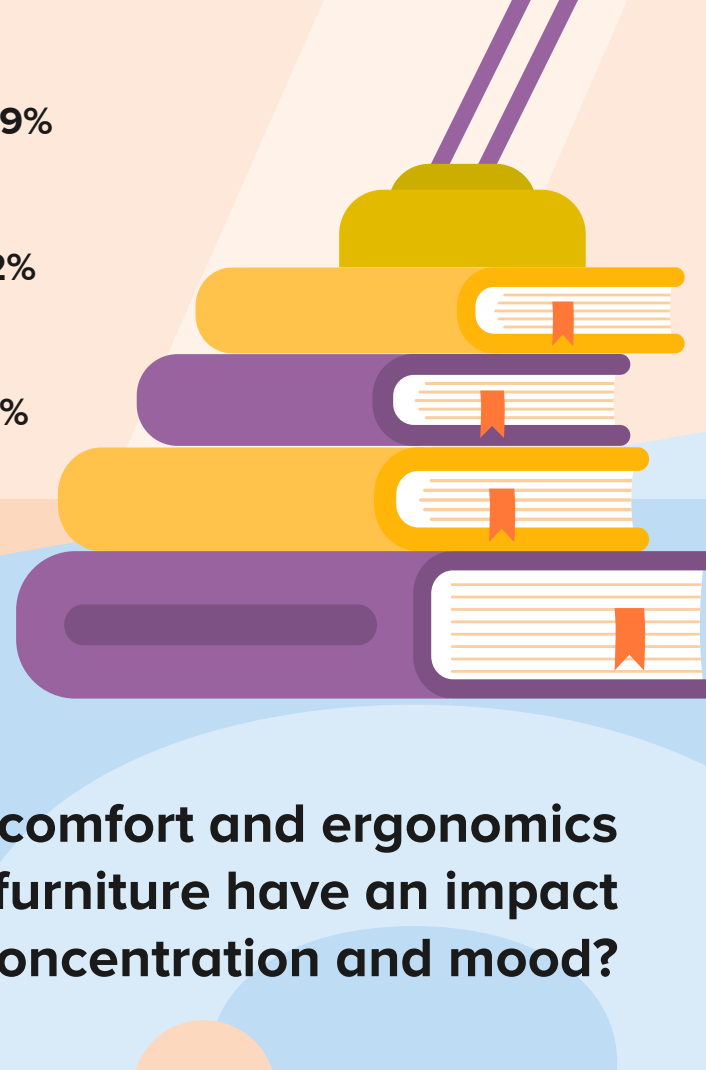
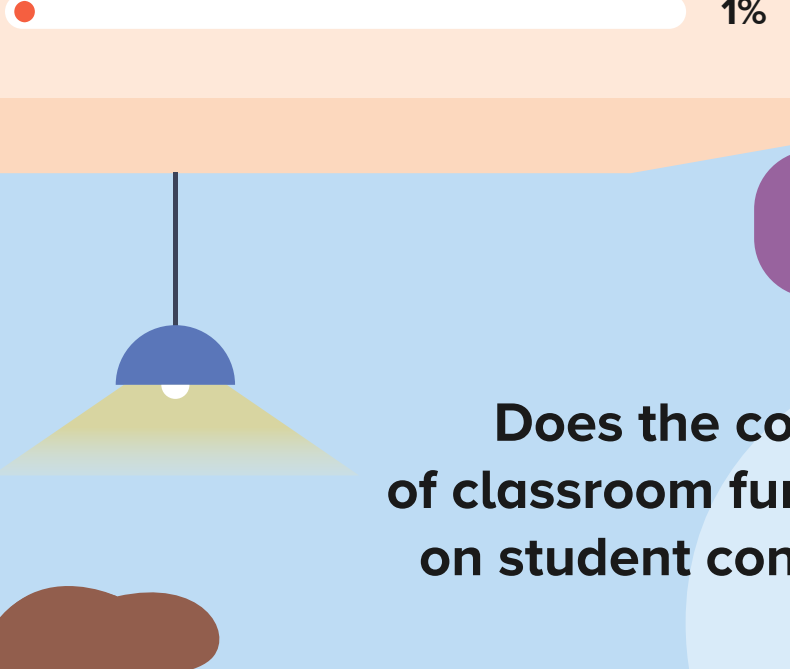


Over 80% of **Western Australian & Tasmanian** teachers agree!

73% of **Private / Independent School** teachers agree

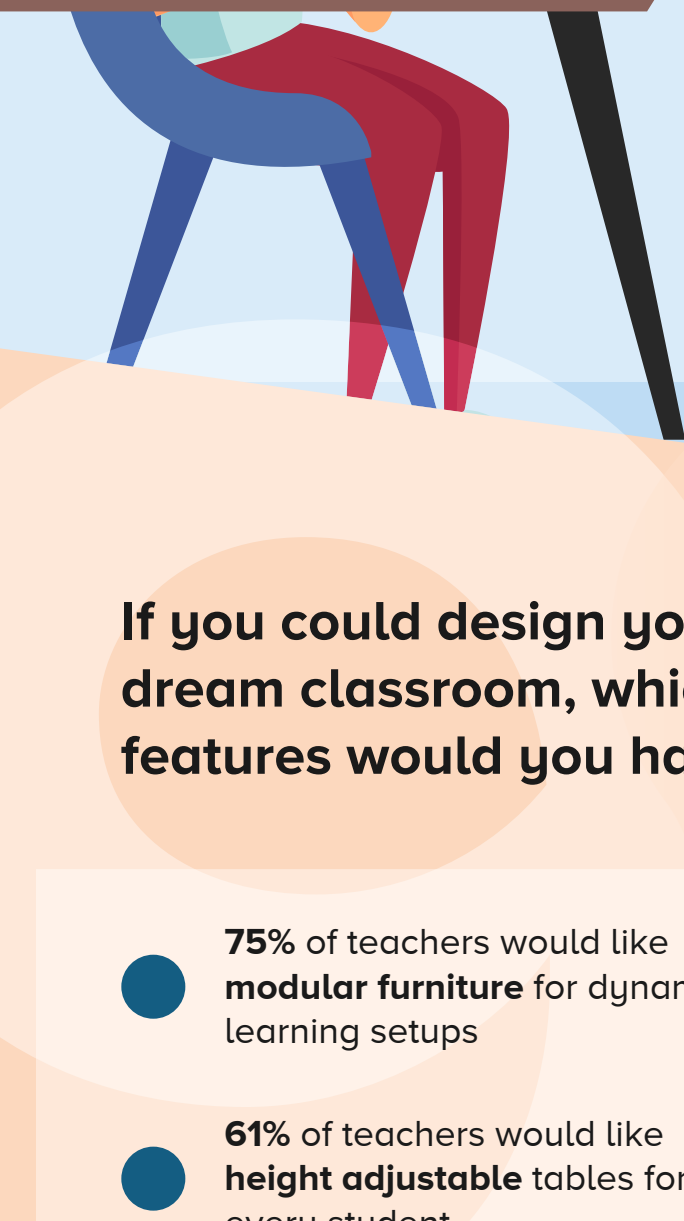
63% of **Public School** teachers agree

Does the colour of classroom furniture have an impact on student concentration and mood?



Does the comfort and ergonomics of classroom furniture have an impact on student concentration and mood?

95% of teachers **agree**



If you could design your dream classroom, which features would you have?

- 75% of teachers would like **modular furniture** for dynamic learning setups
- 61% of teachers would like **height adjustable** tables for every student
- 58% of teachers would like an **indoor garden or green space**



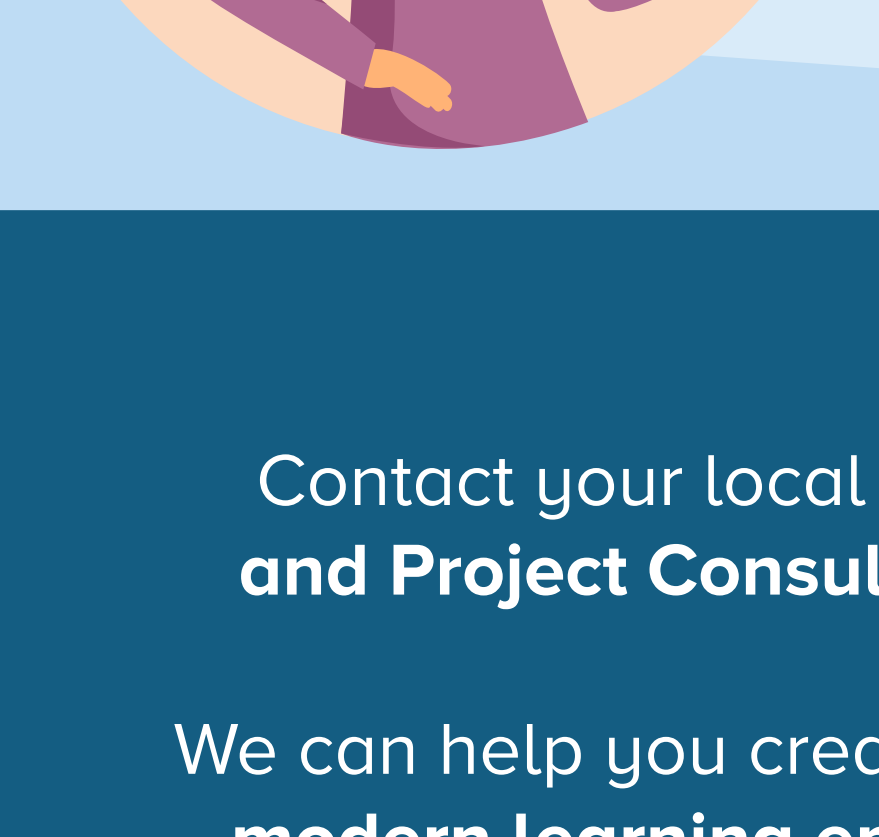
32% would like a **teleportation device** for instant field trips

How do you feel about the change in learning environments over the last 15 years?

69% **positive**

29% **neutral**

2% **negative**



Contact your local **BFX Sales and Project Consultant** today.

We can help you create your **ideal modern learning environment**.

1300 866 522
www.bfx.com.au