





## Ovis

Collection (s)	Ovis
Colour (s)	Cocoa, Ecru, Ivory, Midnight, Nougat, Onyx, Pumice, Spruce, Steel, Umber
Product Type (s)	Heavy Commercial
Styles	Plain, Texture, Contemporary, Urban, Modern
Composition	80% Polyester 10% Acrylic 10% Cotton
Pattern Match	No
Pattern Repeat (cm)	Plain
Railroaded	Plain Fabrics marked Railroaded 'Plain' can be cut in either direction at the discretion of the manufacturer, and in consultation with the customer's preference. Fabric is sampled in the direction it comes up the roll (Non Railroaded).
Width (cm)	142
Roll Size (approx)	35m
Weight (gsm)	630
Origin	Non European
Stain Repellent	No
FIAA Care Label	<a href="#">FIAA Care Label 1 - Pile Fabrics, Velvets &amp; Chenille Wovens</a>
Usage	  Upholstery      Cushion
Guarantee	3 Years in accordance with our product type and care instructions

## Test Results

Martindale (ISO 12947, 12kPA)	87,500 Cycles
Seam Slippage (mm) (ISO 13936-2, Load 180)	Warp 4.3, Weft 5.8
Pilling Resistance (ISO 12945-2)	5
Colourfastness to Light Xenon arc (ISO 105-B02, blue std 6)	> 6
Colourfastness to Rubbing (ISO 105-X12)	Dry 5, Wet 5
Free and Hydrolysed Formaldehyde (ISO 14184-1:1998)	Not Detectable
Flammability AS/NZS 1530.3 - 1999	
Ignitability (0-20)	12
Spread of Flame (0-10)	8
Heat Involved (0-10)	5
Smoke Developed (0-10)	5



# Ovis



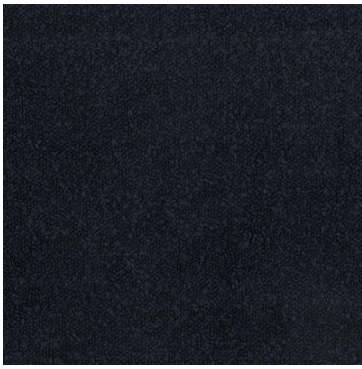
Cocoa



Ecru



Ivory



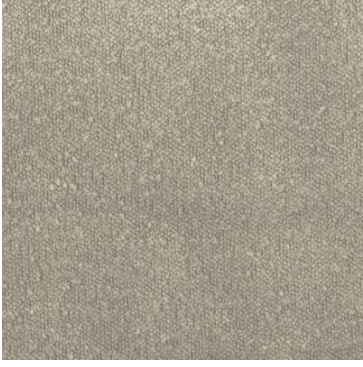
Midnight



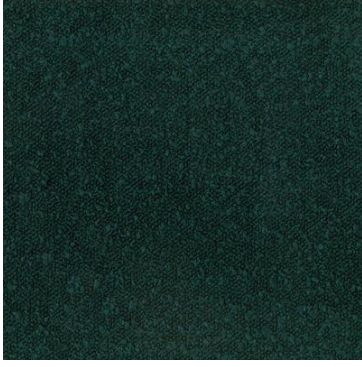
Nougat



Onyx



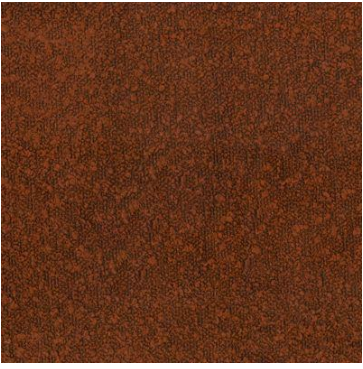
Pumice



Spruce



Steel



Umber