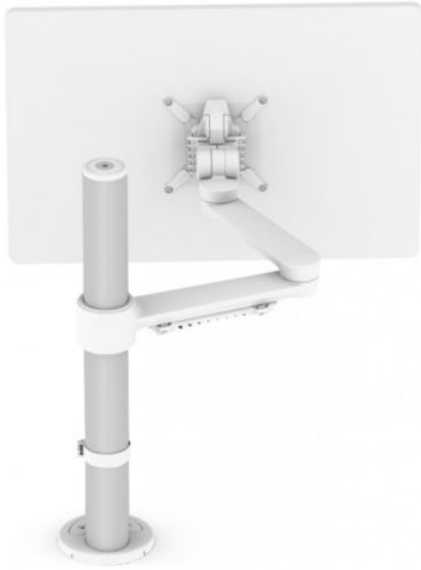


C.ME Single Monitor Arm



SKU: CSM

CONTRACTS



WARRANTY



SPECIFICATIONS

SIZE AND CAPACITY

Weight Capacity: 8 kg per arm

Height Adjustment: 330 mm

Rotation: 90??

COLOUR

Offered in White or Black.

FEATURES

East & Safe push button mechanism

Quick release

90-degree rotation

Cable management

Contact your local BFX Consultant, [click here](#) or scan to view colours & options >

