

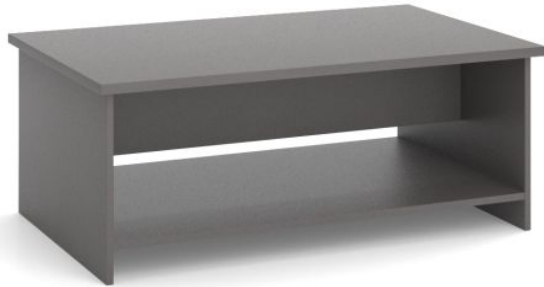
# Commercial Coffee Table With Magazine Shelf



## CERTIFICATIONS



## WARRANTY



SKU: CCT



## SPECIFICATIONS

### SIZE (Millimeters)

475H X 600W X 600D

475H X 900W X 600D

475H X 1200W X 600D

25mm Top

18mm Gables and Shelf

The sizes shown include popular Coffee Table Desk options; please contact your BFX Sales Consultant so we can help you design a Commercial Coffee Table with Magazine Shelf that caters to your individual needs.

### COLOURS

Constructed from an environmentally friendly E0 Commercial board - choose from a wide range of board options. Please contact your local BFX Sales Consultant to discuss a custom-made design that will enhance your office layout.

## FEATURES

Generous table top surface area and shelf space perfect for receptions, waiting rooms and breakout rooms

Low-level table that pairs well with lounges and/or tub chairs

Simple design from 18mm gables and a table shelf with a 25mm top fitted for durability and longevity

Offered in three (3) sizes as standard; however, custom sizes are available

Wide choice of Commercial E0 board colour options

Contact your local BFX Consultant, [click here](#) or scan to view colours & options >

